

The Sawva logo is displayed in white, stylized, rounded letters on a green rectangular background. A small square icon with a crossed-out symbol is located to the right of the brand name.

Sawva 

*Inspired
by safety*

LIFTING BAGS



AUTHORIZED DEALER



FOLLOW
USER MANUAL

WEAR PERSONAL
PROTECTIVE EQUIPMENT





Type CLAW

LOW-PRESSURE LIFTING BAGS 0.5 BAR

1.1



Low-pressure lifting bags are used for lifting very large objects. They have special TOP GRIP pads bonded to the top and bottom of the bag. Top Grip pad offers heavy duty protection from slipping, puncture, abrasion and premature wear. Used for uprighting trucks, rail cars, and other types of vehicles or structures.



Lifting height up to 2.1 m

Ideal for towing recovery

Special TOP GRIP pads

Use on all grounds (rock, glass, metal)

CONTROLLERS



SINGLE FITTING CONTROLLER
0.5 bar
553361



DOUBLE FITTING CONTROLLER
0.5 bar
507801

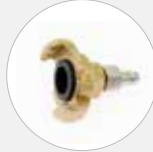


FKT CONTROLLER
4-port - 545631
6-port - 545632
*Other sizes on request

ADAPTERS



SHUT-OFF + SAFETY VALVE 0.5 bar
577465

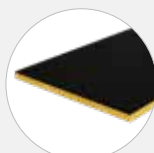


ADAPTER CLAW/26
529704



COMPRESSOR BLOWER
545639

ACCESSORIES



PROTECTION PLATE WOOD+TOP GRIP
581227



REPAIR KIT
522050

INFLATION HOSES



TYPE	5 m	15 m
RED	563931	577956
YELLOW	507802	577957
BLACK	507803	577958
GREEN RIGID	586722	586724



TECHNICAL DATA

TYPE	PART NUMBER	DIMENSIONS		WEIGHT [kg]	WORKING PRESSURE [bar]	NOMINAL CONTENT [l]	AIR REQUIREMENT [l]	MAX LIFTING CAPACITY [t]	MAX. LIFTING HEIGHT [cm]	INFLATION VALVE
		DIAMETER [cm]	HEIGHT [cm]							Thread size
										R 1/2"-female
MS 45	527296	102	10	16	0.5	368	551	4	45	R 1/2"-female
MS 122	527297	135	10	30	0.5	1745	2618	7	122	R 3/4"-male
MS 210	527298	145	10	43	0.5	3466	5199	9	210	R 3/4"-male



Lifting Bag 4 Car is an inflatable bag that comes in handy at replacing flat tyres of passenger vehicles, SUVs, as well as light commercial vehicles.

LB4C is a light, compact and robust bag, which is easy to place under a vehicle and is inflated by means of any compressed air source. If compared to a mechanical car lifter, this bag especially excels if the space is limited. The non-inflated bag is less than 5 cm high; without causing any damage it can be easily placed under a vehicle with a flat tyre, as well as under a vehicle with a lowered chassis, or built-in spoilers.



Perfect for tyre change

Simple operation

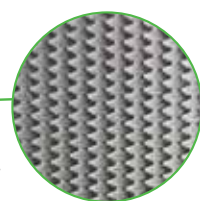
Light, compact and robust

Reinforced top and bottom

NEW



VLB BAG INFLATED 556385



Top and bottom reinforced to provide protection from sharp objects



VLB BAG DEFLATED

ACCESSORIES



SINGLE FITTING CONTROLLER 0.5 bar 583165



INFLATION HOSE 5 M - RED 76683

TECHNICAL DATA

TYPE	PART NUMBER	DIMENSIONS		WEIGHT	WORKING PRESSURE		MAX. LIFTING CAPACITY		MAX. LIFTING HEIGHT	
		LENGTH	WIDTH		[bar]	[psi]	[t]	[Tons]	[cm]	[inch]
		[cm]	[cm]							
VLB BAG	556385	60	60	4.2	0.5	7.25	1.2	1.3	60	24



TYPE GEKA

MEDIUM-PRESSURE LIFTING BAGS 1.0 BAR

1.3.



Medium-pressure lifting bags provide high lifts. They have a soft footprint which makes them ideal for lifting softer structures since the lifting force is spread over a wider area.



Perfect performance on soft grounds	Suitable for high lifts	Made from extra durable materials	Extra fast inflation and deflation
-------------------------------------	-------------------------	-----------------------------------	------------------------------------

CONTROLLERS

ADAPTERS



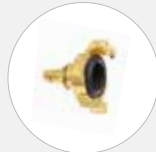
SINGLE FITTING CONTROLLER
1.0 bar
551503



SHUT-OFF + SAFETY VALVE
1.0 bar
551504



DOUBLE FITTING CONTROLLER
1.0 bar
504061



ADAPTER GEKA/26
575711



DOUBLE DEADMAN CONTROLLER 1.0 bar - PLASTIC BOX
528119

CARRY-ON VALISE (FOR 2 BAGS)

ACCESSORIES



521483 MA
521485 MB
521486 MC
521487 MD



REPAIR KIT
522050

INFLATION HOSES



TYPE	5 m	10 m
RED	525662	538935
YELLOW	504063	519817
BLACK	504064	577464



TOP GRIP pads can be supplied on request

TECHNICAL DATA

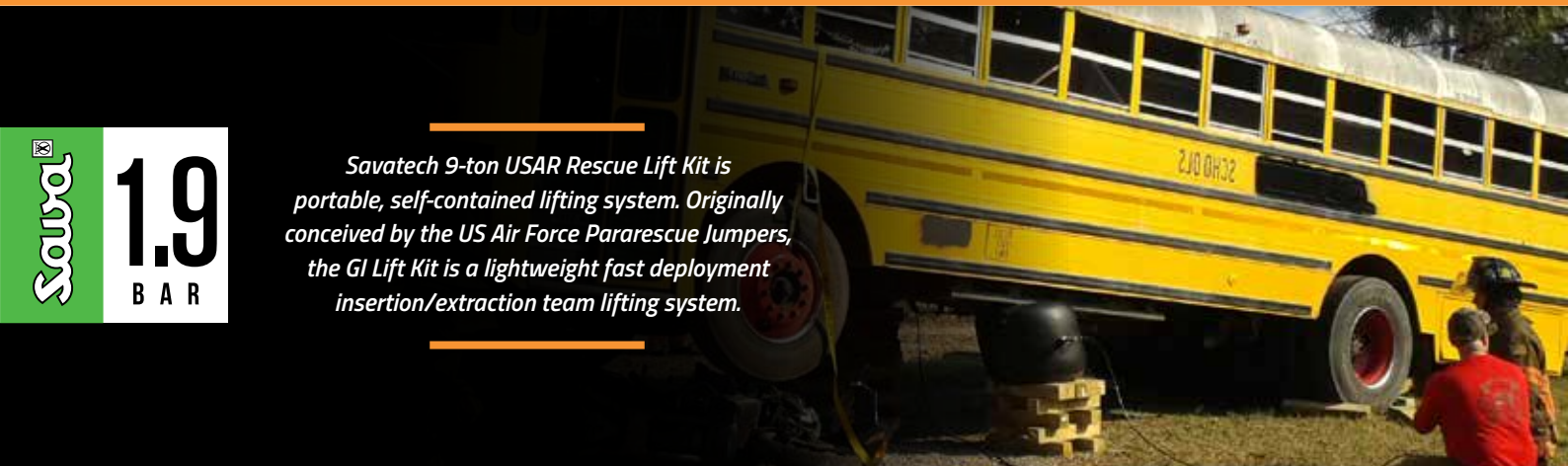
TYPE	PART NUMBER	DIMENSIONS		WEIGHT	WORKING PRESSURE	NOMINAL CONTENT	AIR REQUIREMENT	MAX LIFTING CAPACITY	MAX. LIFTING HEIGHT	INFLATION VALVE
		DIAMETER	HEIGHT							
		[cm]	[cm]							
MA	521478	61	5	7.5	1.0	126	251	3	43	R 3/8" - male
MB	521479	76	5	12	1.0	268	535	4.7	59	R 3/8" - male
MC	521481	91	5	15	1.0	397	793	6.7	61	R 3/8" - male
MD	521482	122	8	35	1.0	1168	2337	12	100	R 3/8" - male



TYPE GEKA

Sauval
1.9
B A R

Savatech 9-ton USAR Rescue Lift Kit is portable, self-contained lifting system. Originally conceived by the US Air Force Pararescue Jumpers, the GI Lift Kit is a lightweight fast deployment insertion/extraction team lifting system.



Soft footprint

Lightweight

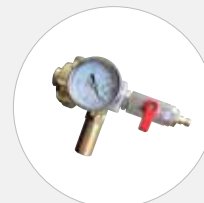
Fast deployment

Use on all grounds (rock, glass, metal)



AX SET

PART NUMBER	DESCRIPTION	QUANTITY [pc]
525022	Lifting bag AX	2
551149	Single controller 1.9 bar	2
551152	Inflation hose 3m, Black	2
76685	Inflation hose 5 m, yellow,	1
551150	Inflation distributor, Y part	1
551154	Backpack for AX set	1
551151	Compressed air cylinder 300 bar, 5l	2
523835	Pressure reducer 200/300 bar	1
522050	Repair kit	1



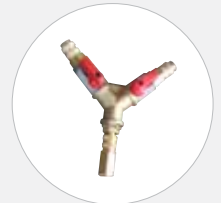
SINGLE CONTROLLER 1.9 BAR
551149



INFLATION HOSE 3M, BLACK
551152



INFLATION HOSE 5 M, YELLOW
76685



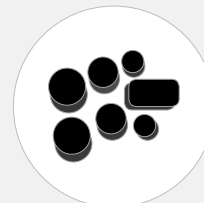
INFLATION DISTRIBUTOR, Y PART
551150



COMPRESSED AIR CYLINDER 300 BAR, 5L
551151



PRESSURE REDUCER 200/300 bar
523835



REPAIR KIT
522050



BACKPACK FOR AX SET
551154

TECHNICAL DATA

TYPE	PART NUMBER	DIMENSIONS		WEIGHT [kg]	WORKING PRESSURE [bar]	NOMINAL CONTENT [l]	AIR REQUIREMENT [l]	MAX. LIFTING CAPACITY [t]	MAX. LIFTING HEIGHT [cm]	INFLATION VALVE
		DIAMETER	HEIGHT							
		[cm]	[cm]							
AX	525022	55	5	4.0	1.9	107	310	4.5	45	R 3/8" - male



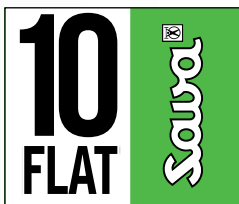
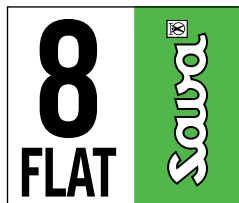
High-pressure lifting bags are used for lifting the heaviest loads. High-pressure lifting bags exert maximum force in a concentrated area, making them ideal when lifting rigid structures in tight places. Their unique structure also allows use in load shifting, heavy truck or aircraft recovery and different moving situations.

Extremely durable

Heavy duty

EN 13731 certified

Thin design



Unique anti-slip surface



Reflective corner markings



Clear & distinctive labels



Strong manipulation handles



Cone-shaped protection edges



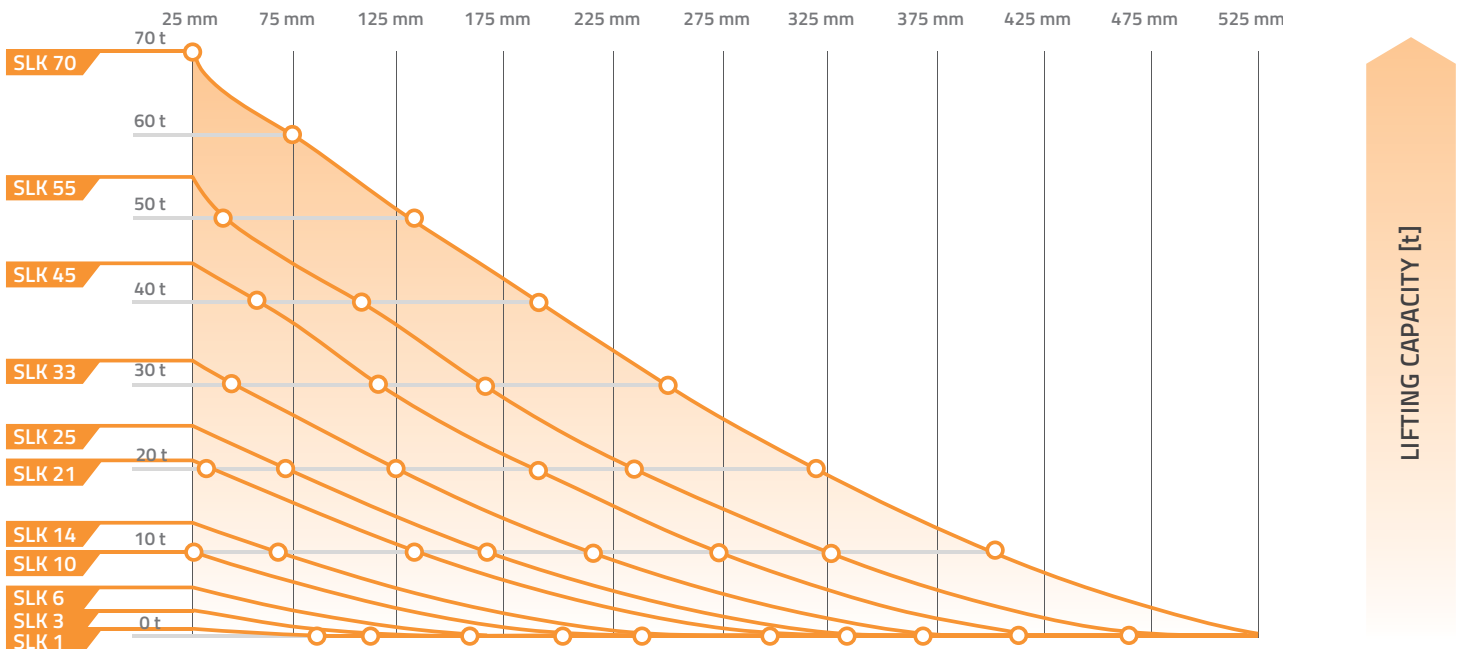
Saubol
8
B A R

EN 13731 certified Stackable up to 2 bags Extra durable Thin design

TECHNICAL DATA

TYPE	PART NUMBER	DIMENSIONS			WEIGHT	WORKING PRESSURE		AIR REQUIREMENT		MAX. LIFTING CAPACITY		MAX. LIFTING HEIGHT	
		LENGTH	WIDTH	HEIGHT		[bar]	[psi]	[l]	[cu./Ft.]	[t]	[Tons]	[cm]	[inch]
		[cm]	[cm]	[cm]									
SLK 1	77973	15	15	2.5	0.55	8	116	5	0.2	1.1	1.2	8	3.1
SLK 3	77974	22.5	22.5	2.5	1.25	8	116	15	0.5	2.7	3	13	5.1
SLK 6	77975	30	30	2.5	2	8	116	42	1.5	5.5	6.1	16	6.3
SLK 10	76734	38	38	2.5	3.5	8	116	86	3.0	10.1	11.1	21	8.3
SLK 14	76735	45	45	2.5	5	8	116	152	5.4	13.5	14.9	25	9.8
SLK 21	76736	55	55	2.5	7	8	116	296	10.5	21.1	23.2	30	11.8
SLK 25	76737	61	61	2.5	9	8	116	416	14.7	25.2	27.7	34	13.4
SLK 33	76738	69	69	2.5	11	8	116	621	21.9	33	36.3	38	15
SLK 45	76739	78	78	2.5	14	8	116	921	32.5	44.6	49.1	42	16.5
SLK 55	76794	87	87	2.5	18	8	116	1305	46.1	55	60.5	47	18.5
SLK 70	573241	94.5	94.5	2.5	22.5	8	116	1505	53.2	70.4	77.4	52	20.5

LIFTING HEIGHT [mm]





HIGH-PRESSURE LIFTING BAGS 8 BAR

1.6.

TYPE 25 SAFETY



8
BAR
Saurat

EN 13731
certified

Stackable up
to 2 bags

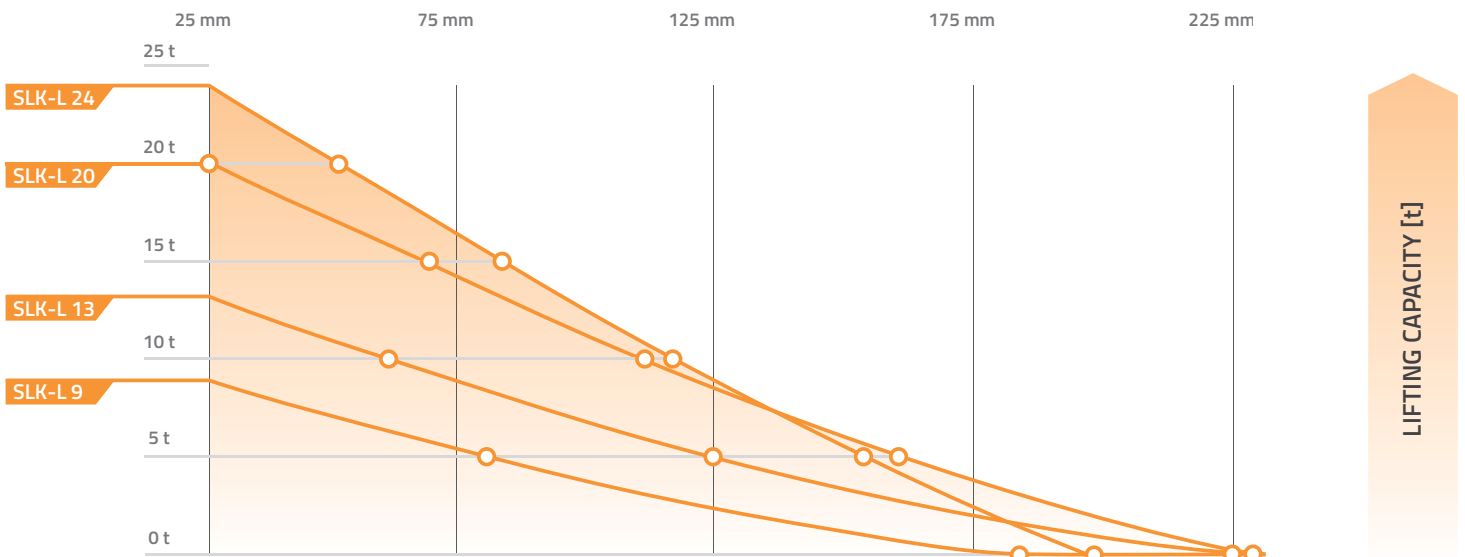
Narrow
design

Easy
manipulation

TECHNICAL DATA

TYPE	PART NUMBER	DIMENSIONS			WEIGHT	WORKING PRESSURE		AIR REQUIREMENT		MAX. LIFTING CAPACITY		MAX. LIFTING HEIGHT	
		LENGTH	WIDTH	HEIGHT		[bar]	[psi]	[l]	[cu./Ft.]	[t]	[Tons]	[cm]	[inch]
		[cm]	[cm]	[cm]									
SLK-L 9	519833	45	30	2.5	3.3	8	116	95	3.4	8.9	9.8	19	7.5
SLK-L 13	519834	50	37.5	2.5	4.5	8	116	170	6.0	13.2	14.5	23	9.1
SLK-L 20	519837	75	37.5	2.5	6.5	8	116	270	9.5	20.2	22.2	23	9.1
SLK-L 24	77983	102	32	2.5	7.8	8	116	220	7.8	24	26.4	20	7.9

LIFTING HEIGHT [mm]



1. 6.

HIGH-PRESSURE LIFTING BAGS 8 BAR (FLAT BAGS)



TYPE 25 SAFETY



Souva
8
FLAT

EN 13731 certified

Stackable up to 3 bags

Superb stability

Flat surface

TECHNICAL DATA

TYPE	PART NUMBER	DIMENSIONS			WEIGHT	WORKING PRESSURE		AIR REQUIREMENT		MAX. LIFTING CAPACITY		MAX. LIFTING HEIGHT		MAX. LIFTING CAPACITY AT MAX. LIFTING HEIGHT	
		LENGTH	WIDTH	HEIGHT		[bar]	[psi]	[l]	[cu./Ft.]	[t]	[Tons]	[cm]	[inch]	[t]	[Tons]
		[cm]	[cm]	[cm]											
SFB-K 7/17	519883	55	55	2.5	7.3	8	116	224	7.9	21.1	23.2	17	6.7	6.7	7.4
SFB-K 10/17	519884	61	61	2.5	9.2	8	116	350	12.4	25.2	27.7	17	6.7	9.5	10.5
SFB-K 20/17	519885	78	78	2.5	14.5	8	116	520	18.4	44.6	49.1	17	6.7	20.2	22.2
SFB-K 33/17	519886	91.5	91.5	2.5	20.6	8	116	810	28.6	64	70.4	17	6.7	33.3	36.6

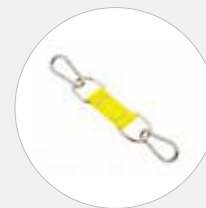
ACCESSORIES (SUITABLE FOR FLAT BAGS ONLY)



TRIPLE DEADMAN CONTROLLER 8 bar - METAL BOX
544124

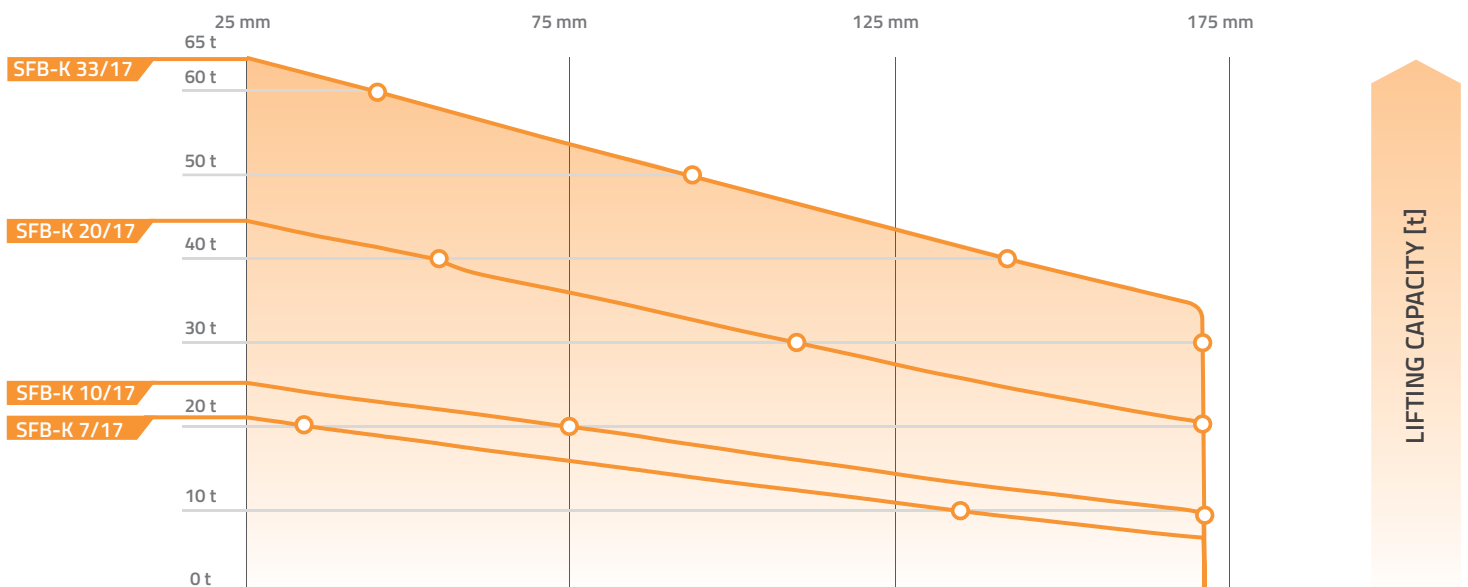


SET OF TRIPLE FLAT BAG CONNECTORS, ORANGE
(4 PCS PER SET)
530545



SET OF DUAL FLAT BAG CONNECTORS, YELLOW
(4 PCS PER SET)
529480

LIFTING HEIGHT [mm]



INFLATION HOSES



TYPE	5 m	10 m
RED	516191	516193
YELLOW	517967	517968
BLUE	516192	516194
GREY	529317	529318



CONTROLLERS



SINGLE FITTING CONTROLLER 8 bar
76681



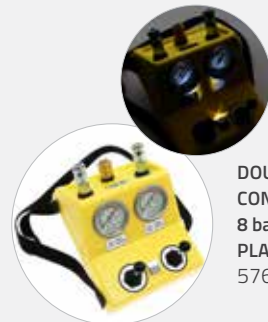
HAND-HELD DOUBLE DEADMAN CONTROLLER 8 bar
519820



DOUBLE FITTING CONTROLLER 8 bar
76682



DOUBLE DEADMAN CONTROLLER 8 bar – PLASTIC BOX
528126



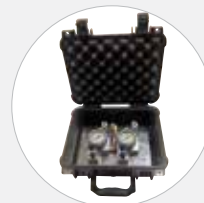
DOUBLE DEADMAN CONTROLLER 8 bar – LED LIGHTS, PLASTIC BOX
576803



HAND-HELD SINGLE DEADMAN CONTROLLER 8 bar
519819



DOUBLE DEADMAN CONTROLLER 8 bar – METAL BOX
528132



DOUBLE CONTROLLER 8 BAR – CASE BOX
579558

OTHER ACCESSORIES



HOSE WITH SHUT-OFF VALVE 0,5 m
525278



HOSE WITH SHUT-OFF + SAFETY VALVE 8 bar, 10 m
544111



FOOT PUMP 8 bar
538320



SHUT-OFF + SAFETY VALVE 8 bar
519051



INFLATION DISTRIBUTOR 1 m, YELLOW
522999



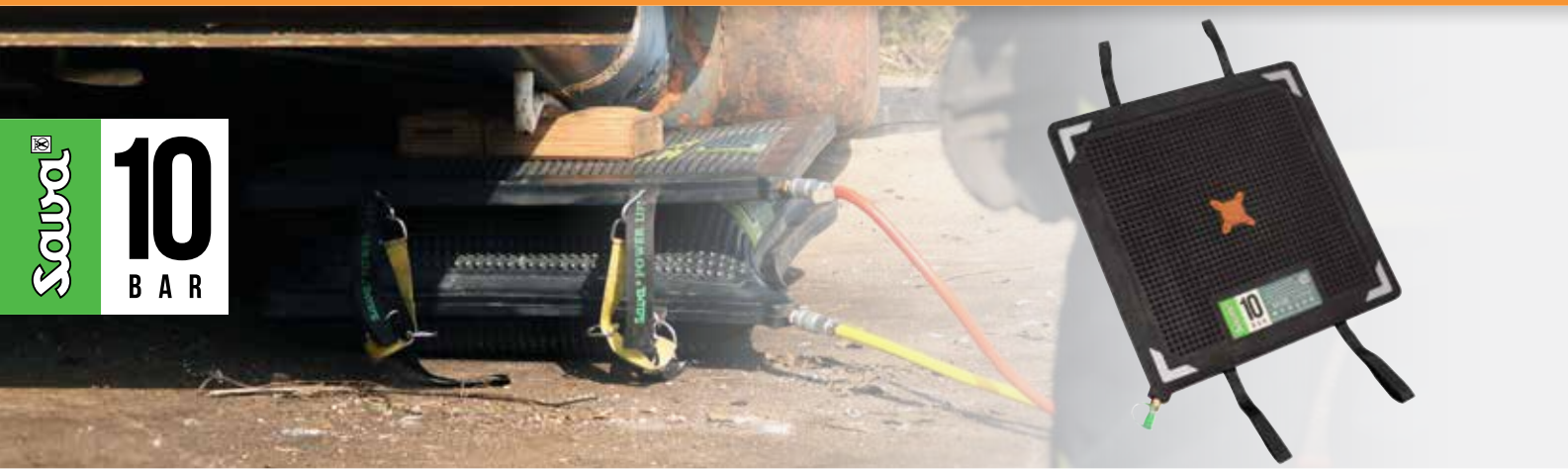
PRESSURE REDUCER 200/300 bar
523835

MINI LIFTING SET





TYPE 25-10



EN 13731 certified

Increased lifting capacity

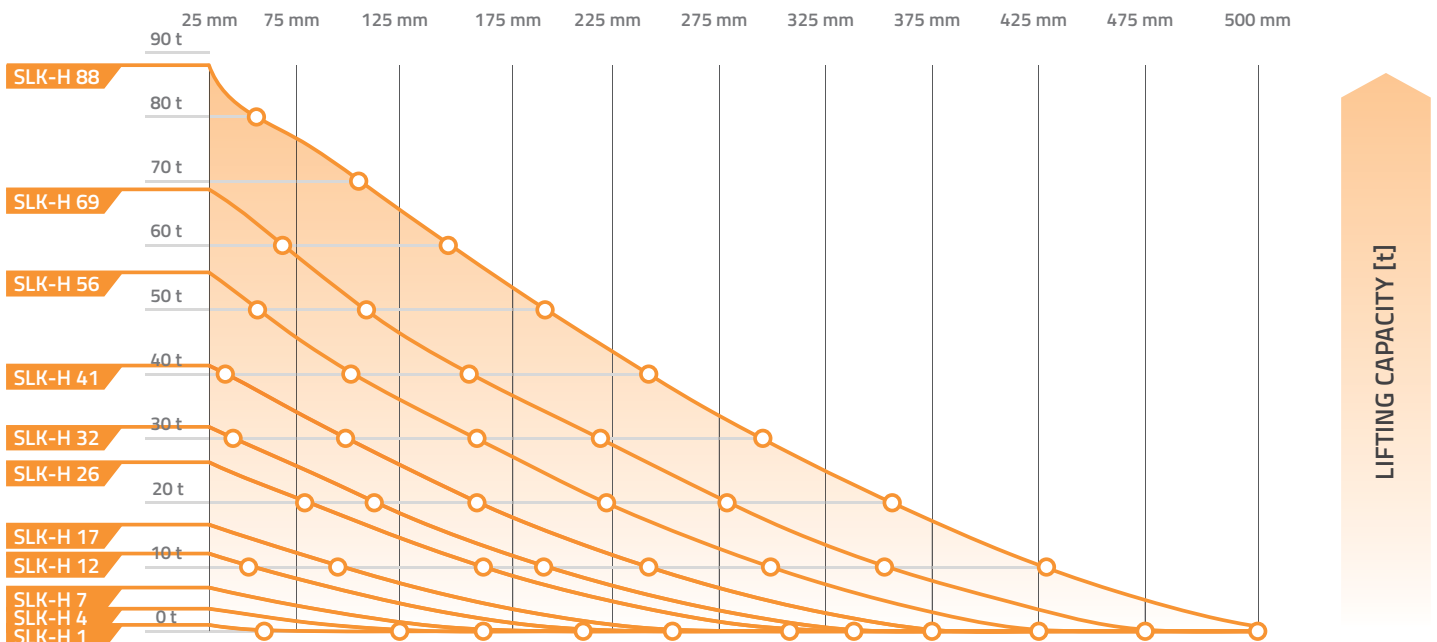
Compatible with 8 bar bags

Heavy duty

TECHNICAL DATA

TYPE	PART NUMBER	DIMENSIONS			WEIGHT	WORKING PRESSURE		AIR REQUIREMENT		MAX. LIFTING CAPACITY		MAX. LIFTING HEIGHT	
		LENGTH	WIDTH	HEIGHT		[bar]	[psi]	[l]	[cu./Ft.]	[t]	[Tons]	[cm]	[inch]
		[cm]	[cm]	[cm]		[kg]	[kg]	[kg]	[kg]	[kg]	[kg]	[kg]	[kg]
SLK- H 1	291240	15	15	2.5	0.55	10	145	7	0.3	1.2	1.3	8	3.1
SLK- H 4	291241	22.5	22.5	2.5	1.25	10	145	19	0.7	3.3	3.6	13	5.1
SLK- H 7	291242	30	30	2.5	2	10	145	52	1.9	6.8	7.5	16	6.3
SLK- H 12	291243	38	38	2.5	3.5	10	145	106	3.8	12.1	13.3	21	8.3
SLK- H 17	291244	45	45	2.5	5	10	145	186	6.6	16.6	18.3	25	9.8
SLK- H 26	291245	55	55	2.5	7	10	145	362	12.8	26.3	28.9	30	11.8
SLK- H 32	291246	61	61	2.5	9	10	145	508	18.0	31.8	35	34	13.4
SLK- H 41	291247	69	69	2.5	11	10	145	759	26.8	41.3	45.4	38	15
SLK- H 56	291248	78	78	2.5	14.1	10	145	1122	39.7	55.8	61.4	42	16.5
SLK- H 69	291249	87	87	2.5	18.2	10	145	1595	56.4	68.7	75.6	47	18.5
SLK- H 88	291250	94.5	94.5	2.6	22.7	10	145	1650	58.3	88	96.8	52	20.5

LIFTING HEIGHT [mm]





HIGH-PRESSURE LIFTING BAGS 10 BAR (FLAT BAGS)

1. 6.

TYPE 25-10



10
FLAT
Saurat

EN 13731
certified

Increased
lifting capacity

Compatible with
8 bar accessories

Heavy
duty

TECHNICAL DATA

TYPE	PART NUMBER	DIMENSIONS			WEIGHT	WORKING PRESSURE		AIR REQUIREMENT		MAX. LIFTING CAPACITY		MAX. LIFTING HEIGHT		MAX. LIFTING CAPACITY AT MAX. LIFTING HEIGHT	
		LENGTH	WIDTH	HEIGHT		[bar]	[psi]	[l]	[cu./Ft.]	[t]	[Tons]	[cm]	[inch]	[t]	[Tons]
		[cm]	[cm]	[cm]		[kg]									
SFB-H 8/17	291294	55	55	2.5	7.4	10	145	280	9.9	26.4	29	17	6.7	8.1	8.9
SFB-H 12/17	291295	61	61	2.5	9.2	10	145	437.5	15.5	31.5	34.7	17	6.7	11.9	13.1
SFB-H 25/17	291296	78	78	2.5	14.5	10	145	650	23	55.8	61.3	17	6.7	25.3	27.8
SFB-H 42/17	291297	91.5	91.5	2.5	20.5	10	145	1012.5	35.8	80	88	17	6.7	41.6	45.8

ACCESSORIES (SUITABLE FOR FLAT BAGS ONLY)



TRIPLE DEADMAN
CONTROLLER 10 bar –
METAL BOX
291298

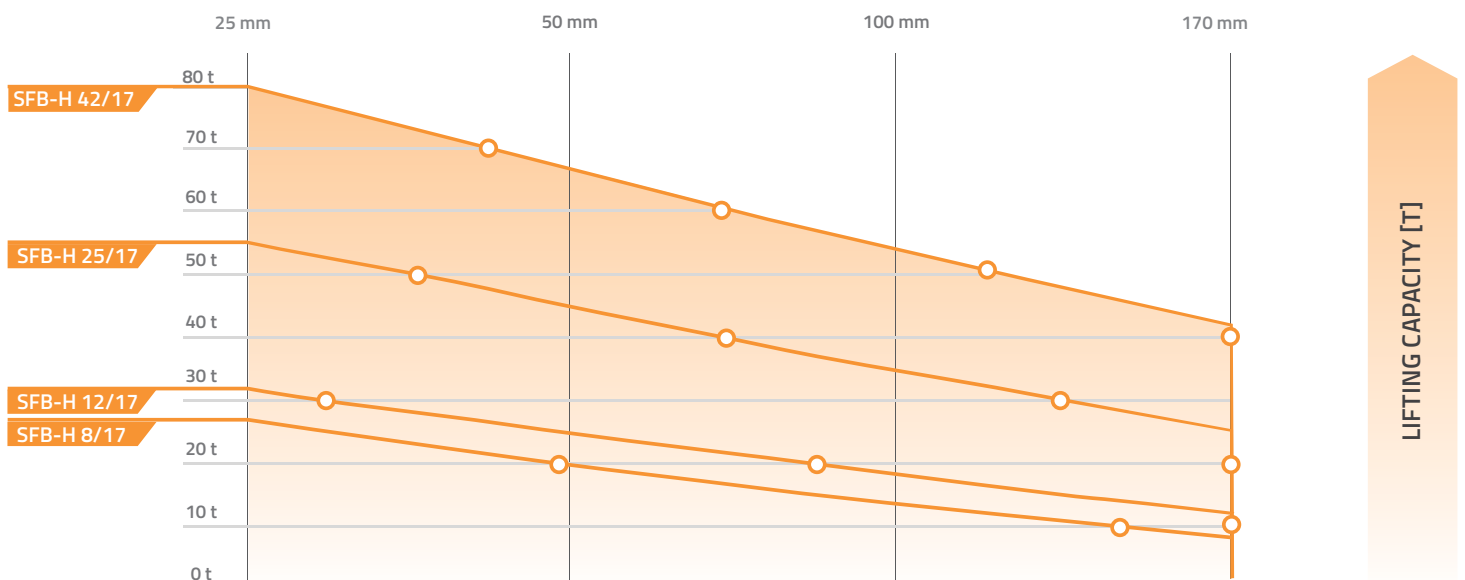


SET OF TRIPLE FLAT
BAG CONNECTORS,
ORANGE
(4 PCS PER SET)
530545



SET OF DUAL FLAT
BAG CONNECTORS,
YELLOW
(4 PCS PER SET)
529480

LIFTING HEIGHT [MM]



1.6. ACCESSORIES FOR HIGH-PRESSURE LIFTING BAGS 10 BAR



INFLATION HOSES



TYPE	5 m	10 m
RED	291261	291265
YELLOW	291260	291264
BLUE	291262	291266
GREY	291263	291267

CONTROLLERS



SINGLE FITTING CONTROLLER 10 bar
291258



HAND-HELD DOUBLE DEADMAN CONTROLLER 10 bar
291257



DOUBLE CONTROLLER 10 BAR – CASE BOX
579559



DOUBLE FITTING CONTROLLER 10 bar
291259



DOUBLE DEADMAN CONTROLLER 10 bar – PLASTIC BOX
291255



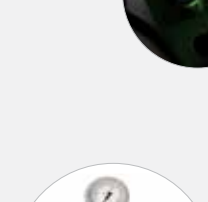
DOUBLE DEADMAN CONTROLLER 10 bar – LED LIGHTS, PLASTIC BOX
291286



HAND-HELD SINGLE DEADMAN CONTROLLER 10 bar
291256



DOUBLE DEADMAN CONTROLLER 10 bar – METAL BOX
291254



PRESSURE REDUCER 300 bar (10 bar system)
557311

Simple switch to 8 bar accessories

OTHER ACCESSORIES



ADAPTER 8 BAR / 10 BAR
291284



SHUT-OFF + SAFETY VALVE 10 BAR
291282



HOSE WITH SHUT-OFF + SAFETY VALVE 10 BAR, 10 m
291290



FOOT PUMP - 10 BAR
576565



INFLATION DISTRIBUTOR 10 BAR 1 m, YELLOW
589334



HOSE WITH SHUT-OFF VALVE 10 BAR 0,5 m
589333

*Inflation accessories have been designed for precision control, high reliability and long life.
They are used with all of our lifting bags – from the source of air to controllers.*



COMPRESSED AIR CYLINDER 300 bar, 6l
528746



CARRY-ON VALISE FOR COMPRESSED AIR CYLINDER
519811



UNIVERSAL CONNECTOR KIT
519809



TRUCK TYRE VALVE CONNECTION
519806



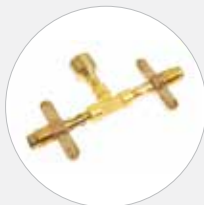
TRUCK TYRE VALVE
519805



COMPRESSED AIR MAINS
519808



TRUCK TYRE INFLATOR ADAPTER
519807



DUAL CONNECTOR FOR COMPRESSED AIR CYLINDERS
529383



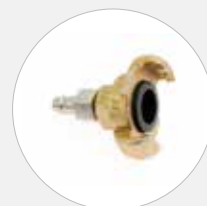
TRIPLE CONNECTOR FOR COMPRESSED AIR CYLINDERS
529384



TRUCK COMPRESSED AIR CONNECTION
529005



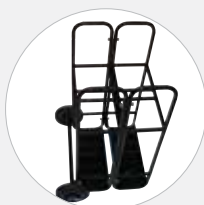
TRUCK COMPRESSED AIR CONNECTION-BLIND COUPLING
529006



ADAPTER FOR CONSTRUCTION SITE COMPRESSOR
529704



SAFETY CARRIER RACK-TWO CYLINDER 6l MODUL-TROLLEY SYSTEM
542868



SAFETY CARRIER RACK-FOUR CYLINDER 6l MODUL-TROLLEY SYSTEM
542872



LOADING PLATES
LOAD PLATE # 350 556308
LOAD PLATE # 420 556309
LOAD PLATE # 520 556310
LOAD PLATE # 670 556311

Conventional and flat lifting bags are intended for lifting, lowering, positioning, spreading, pushing and moving of loads weighing up to 88,000 kg. They are mainly used in rescue operations and industrial lifting.



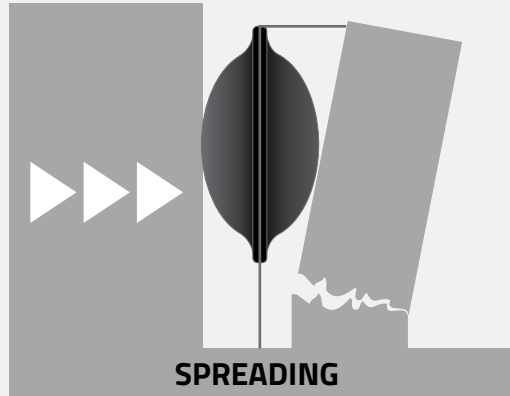
FOLLOW USER MANUAL

Inflation with compressed air

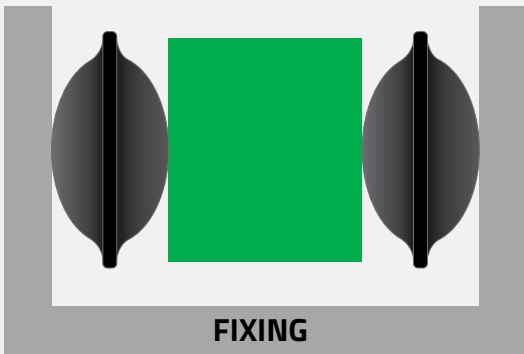
Inflation with water



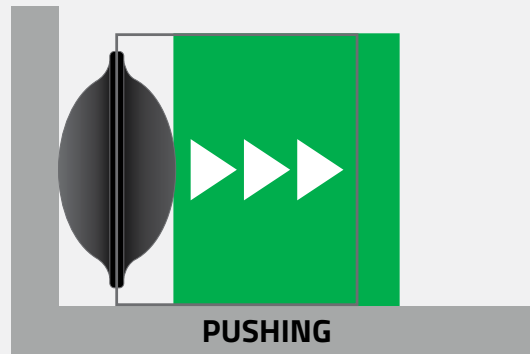
LIFTING



SPREADING



FIXING



PUSHING

IMPORTANT NOTE

Non-compliance with the instructions can result in various injuries. Carefully read the instructions for operation before using the lifting bag.



www.savatech.com/Manuals/index.htm

www.savatech.eu/environmental-protection-and-rescue/manual



Road assistance



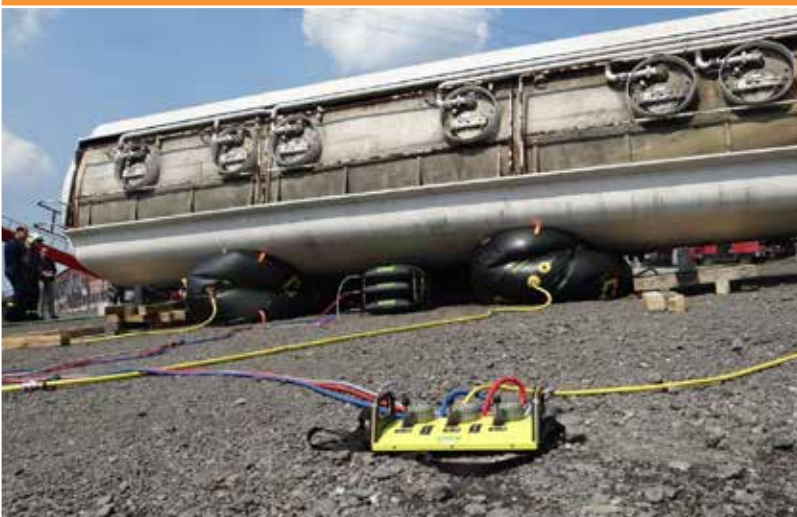
Spreading



Rerailing



Earthquake recovery



Vehicle uprighting



Object moving



Flat Bags

Conventional bags

STACK 3 BAGS ON THE TOP OF EACH OTHER

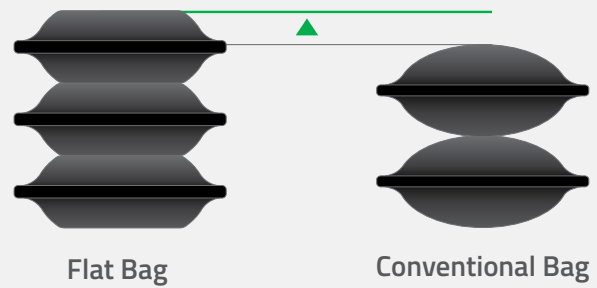
STACK 2 BAGS ON THE TOP OF EACH OTHER



ADVANTAGES OF FLAT BAGS

GREATER CONTACT SURFACE AND STABILITY

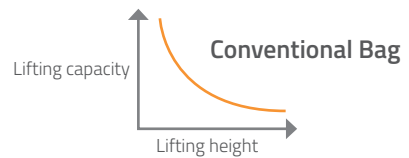
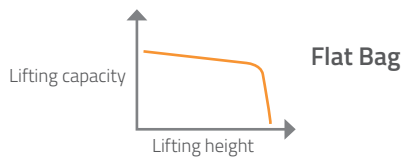
INCREASED HEIGHT



Conventional Bag

Flat Bag

Conventional Bag



What is unique about the Savatech Flat bags is that they start out flat and remain flat even when fully inflated (flat working surface). With the Savatech lifting bags at full inflation height, only the sides curl. The bag doesn't crown as conventional high-pressure lifting bags do.



1. GENERAL CONDITIONS

- 1.1. These warranty conditions apply as of 30 June 2014 for Environmental Protection and Rescue Programme products, manufactured by Savatech (Products). If any provision of this warranty conditions would be contrary to any mandatory legal provisions in any particular jurisdiction, such provision shall apply to a maximum extent as provided for by such mandatory legal provisions.
- 1.2. Products which may be sold by Savatech Environmental Protection and Rescue Programme but are not manufactured by it are not covered by this warranty and are sold exclusively with warranties, if any, by their original manufacturer.

2. MANAGEMENT OF THE PRODUCTS

- 2.1. In order to claim a remedy pursuant to this warranty, purchaser must conform to instructions for management of the Products which are available on:

<http://www.savatech.com/Manuals/index.htm>
www.savatech.eu/environmental-protection-and-rescue/manuals

3. WARRANTY

- 3.1. Savatech warrants to the purchaser that for the period of twelve (12) months as of delivery of the Products, such Products shall be free from defects in material and workmanship, subject to normal and management of the Products, including, among others, proper storage. For high pressure lifting bags, the warranty period amounts to thirty-six (36) months.
- 3.2. This warranty shall be in lieu of any other warranties, express or implied, including, but not limited to, any warranty of merchantability or fitness for a particular purpose.

4. EXCLUSION OF WARRANTY

- 4.1. Warranty shall be excluded in cases where the Products have not been used for the ordinary purpose or have been subject to abnormal conditions such as, but not limited to misuse, mishandling (such as, but not limited to, cuts, tears, vandalism, fire, wilful destruction, improper installation and/or improper maintenance, misapplication), use of unauthorized components or attachments or if adjustments or repairs have been performed by anyone other than Savatech or its authorized agents.
- 4.2. Warranty shall also be excluded and Savatech shall not be held liable in case of force majeure circumstances, such as, but not limited to:
 - war or threat of war, sabotage, insurrection, riots or requisition;
 - all laws, restrictions, regulations, by-laws, prohibitions or any other measures by the governmental, parliamentary or local bodies;
 - import and export regulations or embargo;
 - strikes, lock-outs or other industrial measures or trade disputes (if including Manufacturer's employees or third party);
 - difficulties with supply of raw materials, work force, fuel, parts or machinery;
 - power blackout, break of machinery.

- 4.3. Savatech shall not be held liable for any deficiencies in Products manufactured according to drawings, designs, project drafts and/or specifications provided by the purchaser.

- 4.4. Ordinary wear and tear is not covered by this warranty.

5. MAKING A WARRANTY CLAIM

- 5.1. The Purchaser is obliged to take delivery of the Products and perform an ordinary inspection of the Product upon delivery.
- 5.2. Any claim by the purchaser with reference to the Products shall be deemed waived unless submitted in writing to Savatech within the earlier of (I) eight days as of the discovery of the defect, or (II) twelve months as of the date of delivery of the Products or thirty-six (36) months as of delivery of high pressure lifting bags. Discovery of the defect is deemed to have occurred when a defect could have reasonably been detected by the purchaser.
- 5.3. Claim must at least contain the following data:
 - part number,
 - serial number,
 - description of defect,
 - and must be substantiated by adequate evidence, such as pictures, etc. Upon request, Savatech must be allowed to inspect the Product.
- 5.4. To obtain performance under this warranty, any products suspected of having a manufacturing defect in materials or workmanship shall be returned freight prepaid for inspection to SAVATECH d.o.o., Environmental Protection and Rescue Programme, Škofjeloška c. 6, 4000 Kranj, Slovenia.

6. REMEDIES

- 6.1. Savatech shall decide on a claim within forty -five days after receiving a complete documentation and Product pursuant to art 5.
- 6.2. Providing Savatech acknowledges the claim as justified, it shall, at its discretion, either:
 - repair the Product,
 - replace those components of the Product which are defective,
 - replace the Product, if repair is not possible or reasonable,
 - reimburse the consideration for the Product or its components which are defective.
- 6.3. Whenever Savatech repairs or replaces the Product at its expense or reimburses the purchase price, it shall reimburse the distributor or the purchaser (depending on each case), with a credit note, the same surface freight amount the distributor or the purchaser had when returning the Product to the Manufacturer.
- 6.4. Remedies pursuant to this article 6 shall constitute the sole and exclusive remedy in the event of a breach of warranty. For the avoidance of doubt, Savatech shall not be liable for any incidental, consequential and/or non-pecuniary damages or damages having a comparable effect.

7. CLOSING PROVISIONS

- 7.1. No statement or action by Savatech, whether express or implied, other than set forth herein, shall constitute a warranty.



We are a division of Savatech d.o.o. within the Trelleborg Group. We manufacture and sell rubber products for environmental protection and rescue operations and industrial use. Our growing division was established more than thirty years ago and is constantly striving to meet our customer's current and future needs and expectations.

Knowledge and experience

Professional service

Quality products

A partner to rely on

KNOWLEDGE AND EXPERIENCE

Thirty years of experience and knowledge, investment in new technology, team-work and working closely with our business partners, have enabled us to develop new and exciting products and to continuously improve our existing product range.

QUALITY PRODUCTS

When assessing quality of our products we carefully consider a number of criteria including environmental suitability, ease of use, design, safety, reliability, and packaging. Our production facilities are certified to the ISO 9001 and ISO 14001 standards.

PROFESSIONAL SERVICE

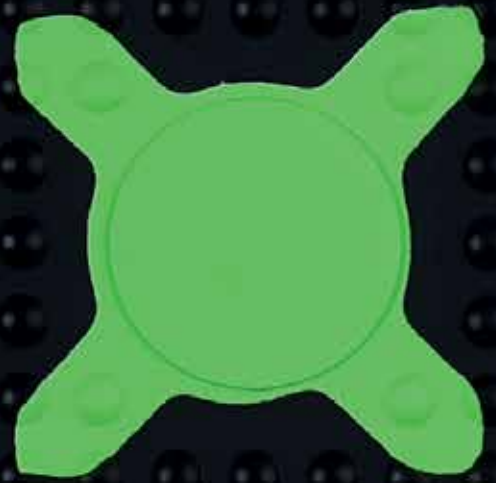
A professional but caring approach, flexibility and quick delivery times combined to provide the ideal service in support of our quality product range.

A PARTNER TO RELY ON

We understand the value of long-term partnership. Our aim is to develop trusting relationships, which foster success and bring benefits to both our partners and ourselves.

QUALITY CERTIFICATES

- ISO 9001
- ISO7TS 16949
- ISO 14001
- OHSAS 18001
- EN 13731
- GOST R 50982-2009
- CNBOP



AUTHORIZED DEALER

C/ Condado de Treviño, 71. Nave 3
09001 - Burgos

Tel: +34 947 215 125
Fax: +34 947 215 125

www.iberisasl.com
iberisasl@iberisasl.com